

Coantec X5 series

High Performance Multifunctional Industrial Videoscope



- Servomotor All-Way Probe articulation
Physical+virtual joystick control
- Original motor-control tube replacement technology
- Tip optic interchangeability with secure double threads
- Dual engine power supply, ultra-long endurance
- IPS HD touch screen, can be removed for separate operation
- Wi-Fi / WLAN / Bluetooth file transmission
- 3D measurement function (Premium version)

Redefining the all-in-one handheld industrial videoscope

COANTEC LTD

Floor 4, Block B, Building 5, Hengmingwan Chuanghui Center, Longping West Road, Longcheng Street, Longgang District, Shenzhen, China 518172

E-mail: zyd@chinavideoscope.com

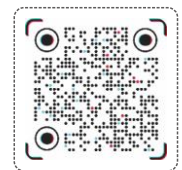
Tel: +86 755 8972 8626

Web: www.chinavideoscope.com

www.chinaborescopes.com



Website



TikTok

X5 Turbine inspection



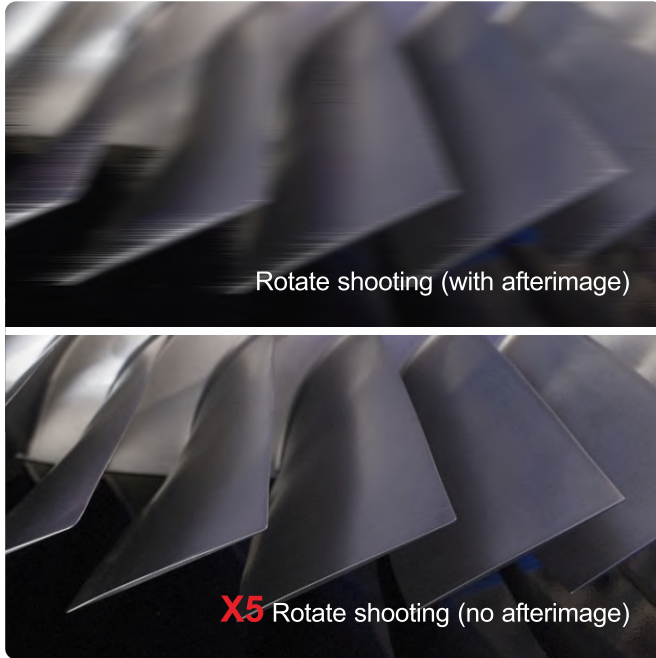
1. Brief Introduction

X5 series is a high-performance industrial videoscope which used to inspect the internal surface of equipment or components, it delivers HD visuals, a high-intensity light source, and superior visual processing, for clearer, sharper videos and still images. New modular design allows quick replacement for the touch screen and the insertion tube. Unique dual engine power supply mode, battery life can be lasted to 8 hours. With powerful software functions, it can adapt to different inspection applications and effectively improve the efficiency of inspection. This instrument can be used in aviation, aerospace, automobile, railway, shipping, energy, petrochemical, electric power, military, special inspection and other fields.

2. Powerful Performance

High quality lossless image

Built-in image sensor with high sensitivity image algorithm, delivers HD visuals, a high-intensity light source, and superior visual processing, or clearer, sharper videos and still images right on your device, which is convenient to observe various subtle defects inside the equipment or interior of parts.



Electric handheld integrated design

Rugged, ergonomic design, easy to hold, 360° all-way articulating electric control joystick, responsive without delay, makes the inspection much easier.



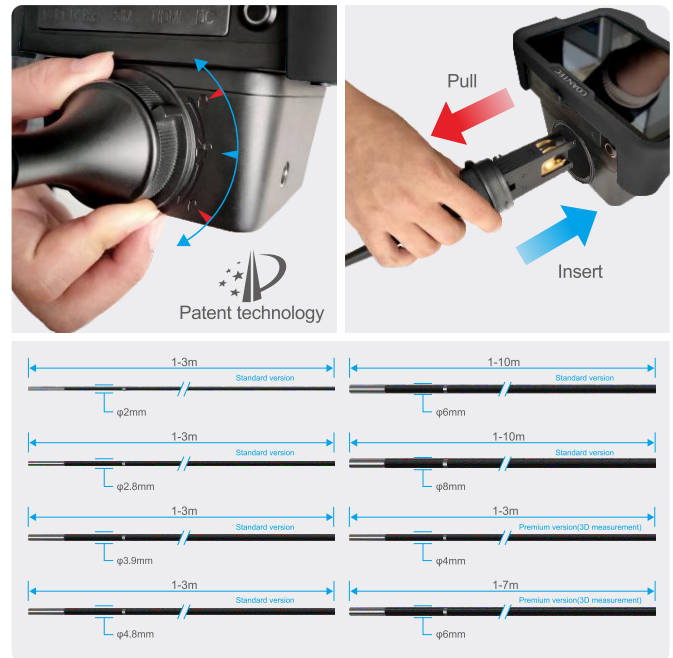
IPS full lamination HD touch screen

Brand new IPS full lamination HD touch screen, connected to the host by blade connectors, stable and reliable, it's easy to be replaced. We make 6-inch touchscreen for X5 standard version, and 7-inch touchscreen for X5 Pro 3D measurement version.



Original electric-control probe replacement technology

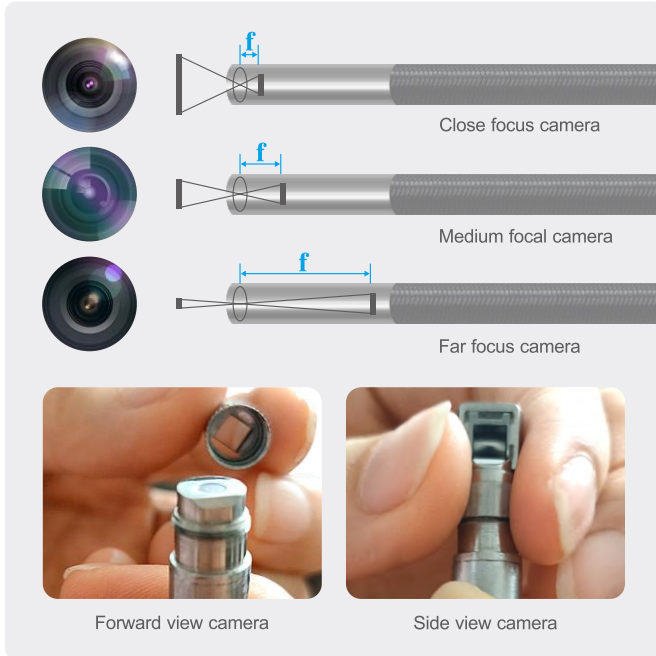
The host can be equipped with tubes in different lengths, diameters, light sources, users can save the use cost at maximum. The insertion tube is connected with the host by buckle and interference fit (original patent), which makes disassembly and assembly more convenient and faster.



2. Powerful Performance

Different focal length lenses can be replaced

Unique double threaded tip adaptor, the tube can be equipped with lenses in different focus, view angle, and view direction (direct/side view). It is suitable for inspecting targets at different distances, presenting clearer image.



Larger storage space

The host has built-in 16G large storage space by default (which can be expanded to 32G/64G/128G). It is equipped with two USB ports for external USB disk, which can be used to access data and upgrade software.



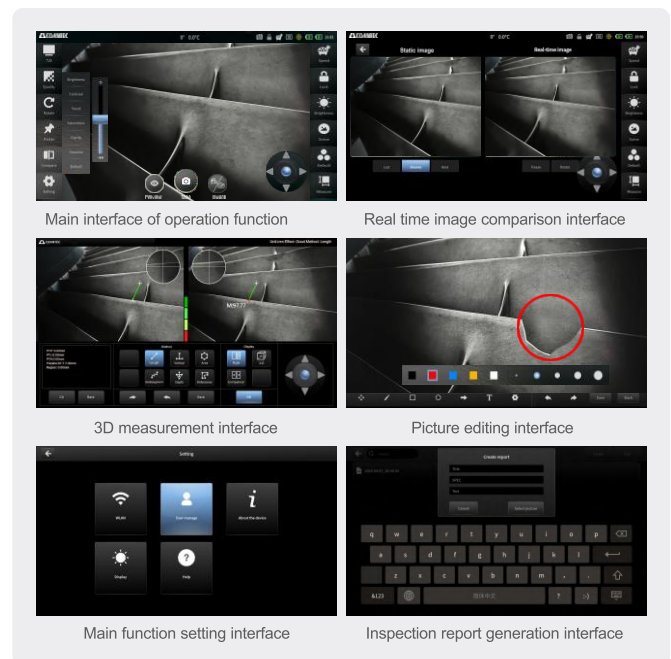
New 3D measurement function

X5 Pro series 7-inch premium version is equipped with 3D measuring system, which can accurately measure length, vertical, depth, and multisegment, etc. With measuring accuracy of 0.01mm and error $\leq 5\%$.



Powerful function, simple interface

Simple new UI interface, can realize photography, video, virtual rocker operation, speed and slow adjustment, brightness adjustment, file management, real-time comparison, report generation, wireless connection, live streaming, etc. User-friendly design, simple and easy to operate.



2. Powerful Performance

Dual engine power supply, long endurance

The original dual-engine power supply mode is adopted, and rechargeable large-capacity lithium polymer battery is built into the handle and display screen, which can be used for more than 6 hours to achieve ultra-long battery life. Fast battery charging technology, with higher charging efficiency.



Strong and durable, resistant to fall and wear

The shell of the host is of more abrasion resistant and scratch resistant ABS+PC, and the display screen is equipped with anti-fall silica gel to make it more durable. High performance professional instrument case, convenient storage, easy to travel with.



3. Technical Specification

	X5(Standard version)	X5 Pro(Premium 3D measurement version)
● standard configuration ○ optional configuration or accessory * / * not provided		
Display	Brand new IPS HD touch screen	
Display size	6-inch	7-inch
Display resolution	1280*720	1920*1200
Display detachable	●	●
Host system		
User interface	Use the touch screen, physical buttons, and joystick menus to navigate	
Host storage capacity	16G	128G
Storage memory expandable	○	-
Host running memory	The standard running memory is 2GB and can be expanded to 4GB	
Photography function	●	●
Image format	JPG/BMP	
Video recording function	●	●
Video format	MP4	
Real-time image zoom	1-5 times through button, or touchscreen	
LED brightness adjustable	0-9 level	
Image effect	Image brightness, contrast, hue, saturation, sharpness, gamma	
Display brightness manual adjustment	●	●
Display brightness automatic adjustment	○	●
Video resolution	640*360, 640*480, 1280*720 optional (based on the actual parameter of the camera)	
Image mode	Default, monochrome, negative, bright, highlighted, or soft.	
Image rotation	●	●
Image freezing	●	●
Image real-time comparison	●	●
Time watermark	●	●
Virtual joystick	●	●
Report generation	●	●
Ruler	none, circular ruler, cross ruler, or reference line	

Host system		
Bluetooth data transmission	●	●
WiFi data transmission	●	●
Audio input and output	●	●
Battery power monitoring (shutdown state)	●	●
File operations	Full screen view/image/zoom/delete/rotate/graffiti etc	
Image Zoom	1-5 times (by button or touch screen)	
File edit	Text annotation and graffiti functions (handwritten lines, arrows, boxes, round signs, text annotation, and can set the brush color and thickness)	
User permission management	Administrator, Visitors, Standard user (created by administrator)	
Menu language	Simplified Chinese, English, Japanese, Korean, French, German, Portuguese, Spanish, Russian, Italian, Dutch and more than 10 other languages	
Input method	5 language input methods: Chinese, Russian, English, German and French	
Software package of 3D measurement system	○	Length, vertical, depth, and multisegment, etc. 3D measurement accuracy 0.01mm, measurement error ≤5%
Output port	●	●
HDMI video output port	●	●
3.5mm audio port	●	●
USB 3.0 port*2	●	●
Type C port	●	●
Dimensions		
Host size	326mm*185mm*118mm	350mm*197mm*126mm
Packing size	551mm*351mm*240mm	551mm*351mm*240mm
Host weight(including battery)	2kg	2.1kg
Insertion tube		
Tube diameter (±0.1mm)	2mm	Tube length: 1m~3m available (The measurement function is only available for tubes larger than 4mm)
	2.8mm	
	3.9mm	
	4.8mm	
	6mm	Tube length: 1m~10m available (no 3D measurement); 1m~5m available (X5 Pro, with 3D measurement)

Insertion tube	
8mm	Tube length:1m~10m available
Depth of view	5-50mm/5-100mm/8-250mm*
View angle	70°/80°/100°/120°**
Camera pixels	16,000/30,000/1,000,000/2,000,000*
Tube replacement	●
Lens replacement	○
View direction	Front view/side view
Light source:front LED	○
Light source:rear-mounted LED Fiber light guiding	○
360°all-way articulation	●
Motor- control joystick	●
Probe bending angle	≥160° (eg.for 6mm,1m tube)
Bending speed	Fast/Slow,3-level in each mode
Probe lock/release	●
Probe housing material	Super hard alloy protection case
Tube material	Tungsten wire wear-resistant braided tube
Tube waterproof level	IP67
Power supply	
Input power	Input:220±10%V 50Hz
Output	Output: DC15V 6A
Battery fast charging	Charging for 5 minutes can be used for half an hour;50 minutes full charged
Host battery capacity (non-removable)	Voltage:7.4V,Capacity:≥6000mAh

Handle battery capacity (removable)	Voltage:7.4V,Capacity:≥5000mAh
Continuous working time	≥ 6h (full charged)
Operating environment	
System operating temperature	-20°C~55°C
Tip operating temperature	-20°C~85°C
Storage temperature	-20°C~60°C
Relative humidity	15%~90%
Accessories	
Special instrument case	●
USB flash disk	●
Power adaptor	●
Pipe centralizer	○
Battery pack	○
Shoulder strap	○
Battery charger	●
HDMI cable	●
Customization	
Tube length,diameter, light source	○
Tube can be added with a scale	○
Software	○
Display size	○
Lens	○
*The specific parameters are subject to the actual product. please contact to the sales for confirmation.	